

PRODUCT DATA SHEET

melbo

MELCHERS BODENSYSYSTEME

C- Profiles 40 x 80 x 2 mm



Standard length: 2.400 & 3.000 mm

Standard length lateral: 558 mm

Dimensions: C(8.5) x 80 x 40 x 80 mm

Thickness of C-profile: 2 mm

Opening slot for M8 hammerhead bolt

Attributes:

Material: DX51D+Z140 / cold-rolled profiles DIN EN 10.162:2003

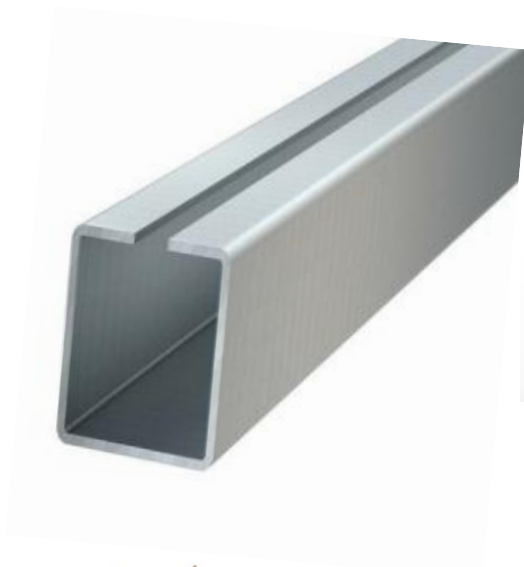
Weight: 3,25 kgs per meter

Surface finish: Continuously hot-dip coated steel flat products for cold forming
acc. DIN EN 10.346:2015

Product Specification:

C-Profiles are an integral part of switchgear systems for e.g. data centres.

The profiles must be screwed with the Melchers HKM8 (hammerhead bolt) on top of the switchgear heads, e.g. SL100, SLG130. Or with self-tapped screws on the side of the SLG130 lug.



HKM8 / hammerhead bolt

EST.  1806
MELCHERS

